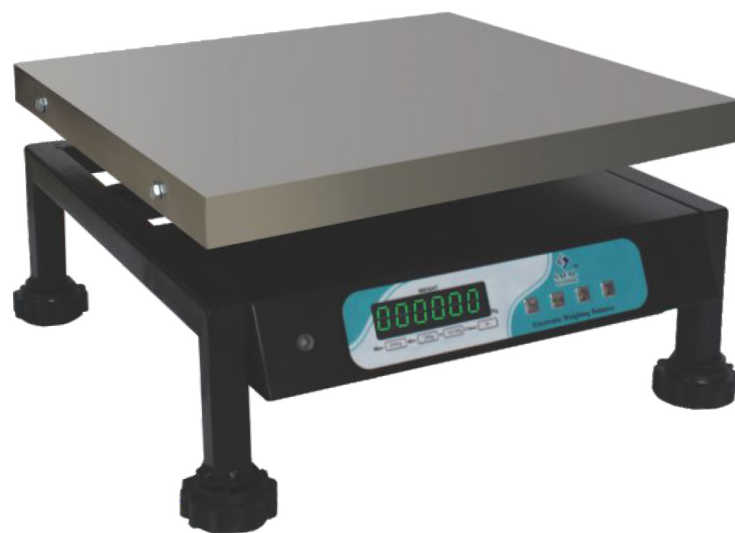


# CHIKAN SCALE - SS

Se10

- Soft Touch Tactile Switches
- Quick Response Time
- Tare Facility with Zero Function
- LED Display
- SS Body
- Easy to Operate, Compact Design



AN ISO 9001 COMPANY



# CHIKAN SCALE - SS Se10

## TECHNICAL DETAILS

MODEL	CAPACITY	E VALUE	PLATFORM SIZE (mm)		
Se08	50 Kg.	5 g.	350 x 350	—	—
Se08 / Se09 / Se10 / Se11	50/100 Kg.	5/10 g.	350 x 350	400 x 400	500 x 500
Se09 / Se10 / Se11	100/200 Kg.	10/20 g.	400 x 400	500 x 500	600 x 600
Se09 / Se10 / Se11	100/200/300 Kg.	10/20/50 g.	400 x 400	500 x 500	600 x 600
Se09 / Se10 / Se11	500 Kg.	50 g.	600 x 600	750 x 750	—
Se11	1000 Kg.	100 g.	900 x 900	1000 x 1000	—
Se11	1000/2000 Kg.	100/200 g.	1200 x 1200	1500 x 1500	—

## TECHNICAL FEATURES

- Over load protection
  - Weather & water proof sophisticated tactile keyboard
  - High accurate load cell
- Approved by weight & Measurement Dept. Govt. of Gujarat
  - 12 to 15 w power consumption
  - 230 V ± 10% 50Hz volts AC.
  - Operating Temperature Range 0°C to 50°C

## OTHER PRODUCTS



PRICE COMPUTING SCALE

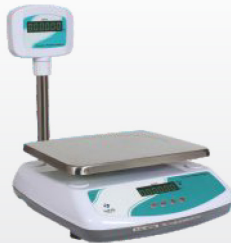


TABLE TOP SCALE



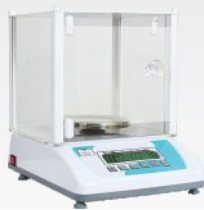
COUNTER SCALE



SMART SCALE



PLATFORM SCALE



JEWELLERY SCALE



CHIKAN SCALE



CRANE SCALE



### UNIT -1 ADDRESS

Kalanabagram, Shikshaniketan, Memari, Purba Bardhaman, 713124  
Mobile No : +91 8926222400, +91 8609370770

### UNIT-2 ADDRESS

B.Jemari, Salanpur, Paschim Bardhaman  
Mobile No : +91 9735115841

✉ [apptek.bdn@gmail.com](mailto:apptek.bdn@gmail.com)

🌐 [www.apptek.in](http://www.apptek.in)

Marketed by: